



An iconic landmark, famous to visitors around the world, BT Tower just celebrated its 50 year anniversary in October. The tower, located in London, England, has served as an important communications hub and is currently the home of the *TV Network Switching Centre*, broadcasting traffic for television companies including the BBC.

BT Tower

PROJECT SUMMARY

Building Description	Narrow cylindrical shaped building designed to serve as a telecommunications hub. First-ever purpose-built telecommunications tower. Grade II listed building status in 2003
Official Building Name	BT Tower Original Name - Post Office Tower
Previous Names	London Telecom Tower British Telecom Tower
Location	London, England
Construction Start	June 1961
Completion Opening	July 15, 1964 October 8, 1965
History	Tallest Building in England until 1981 (NatWest Tower) Working Icon of Technological Evolution
Construction Costs	£2.5 million

LEADERSHIP | PROJECT | CONSTRUCTION

Prime Minister	Harold Wilson
General Post Office (GPO)	Post Office Tower commissioned by GPO with the primary purpose of supporting microwave aerials to carry telecommunications traffic from London throughout the country.
Architects	Ministry of Public Buildings and Works Eric Bedford and G.R. Yeats
Primary Contractor	Peter Lind & Company, Ltd

CURRENT USE

Communications	Television Network Switching Center Carries broadcasting traffic and relays signals between broadcasters, production companies, advertisers, international satellite services and uplink companies.
Public Use	Role in high-profile public events : London 2012 Olympic & Paralympic Games; Charity events - Children in Need Comic Relief

BT Tower

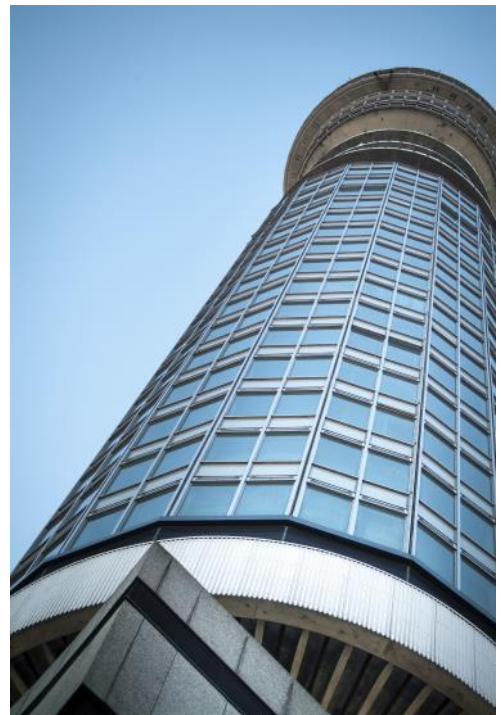
BUILDING CONSTRUCTION SUMMARY

Notable Facts	<p>One of London's most recognizable and iconic structures</p> <p>Scene of several movies - <i>Doctor Who</i> & <i>The Bourne Ultimatum</i></p> <p>Year of Opening, the Beatles took over America with their song 'I want to hold your hand', which claimed the #1 spot in the US charts.</p> <p>1971 bombing (31st floor) - responsibility claimed by Provisional IRA</p> <p>360° color lighting display introduced in early 2000's (floors 36-37). Upgraded to LED display system in 2009. Scrolling electronic sign for public announcements including birth of Princess Charlotte 2015.</p> <p>Prince Harry's first tweet from 34th floor</p>
Height	<p>581 Feet 177 Meters (roof)</p> <p>627 Feet 191 Meters (antenna spire)</p>
Number of Floors	37
Design	<p>Narrow cylindrical shape in order to accommodate the specific performance requirements of communication aerials. The building will sway no more than 10" in wind speeds up 95mph. Design allows for precise 360° placement of telecommunications apparatus.</p> <p>Although technically a television-telecommunications tower, it does have regular floors throughout most of its height.</p>
Original Amenities	<p>Observation Tower - 4,000 visitors per day (1960's)</p> <p>Revolving Restaurant 34th Floor (1966 - 1980) "Top of the Tower"</p>
Structural Steel	Base - 95 tons high-tensile steel Structure - 695 tons of mild steel
Concrete	13,000 tons
Façade	Concrete structure and 50,000 SF of glazing, with specialized tinting, to reduce solar heat gain.
Elevators	2 Elevators High-speed (7 meters per second) gearless traction machines installed in 2000 and among the fastest in Europe

BT Tower | Working Icon of Technological Innovation



Key communications hub for over fifty years and is currently the home of TV Networking Switching Centre. The BT tower represents Europe's most complex switching center.



Photos - Top Left Clockwise

1. View from Southeast - Thames River Blackfriars Bridge
2. Central London
3. Cylindrical concrete & steel structure with tinted glazed cladding
4. LED display system - seasonal greetings illuminated message (floors 36 - 37)